



LET'S
CONNECT

INTERNATIONAL
PRINECT USER DAYS



Workshop for Specialists

**Signa Station Auto Marks & Generic Multi Process Curve Set
as prerequisite for automation**

Agenda



1. Workshop 28

18. Mai 2022 | 9.10 – 9.50 am | Wiesloch Hall 11 | Room 2 36

→ Signa Station - Auto Marks | Timm Haase / Andreas Vieweg

→ Calibration Manager - Generic Multi Process Curve Set | Andreas Vieweg

2. Workshop 42

18. Mai 2022 | 11.10 – 11.50 am | Wiesloch Hall 11 | Room 2 36

→ Signa Station - Auto Marks | Timm Haase / Andreas Vieweg

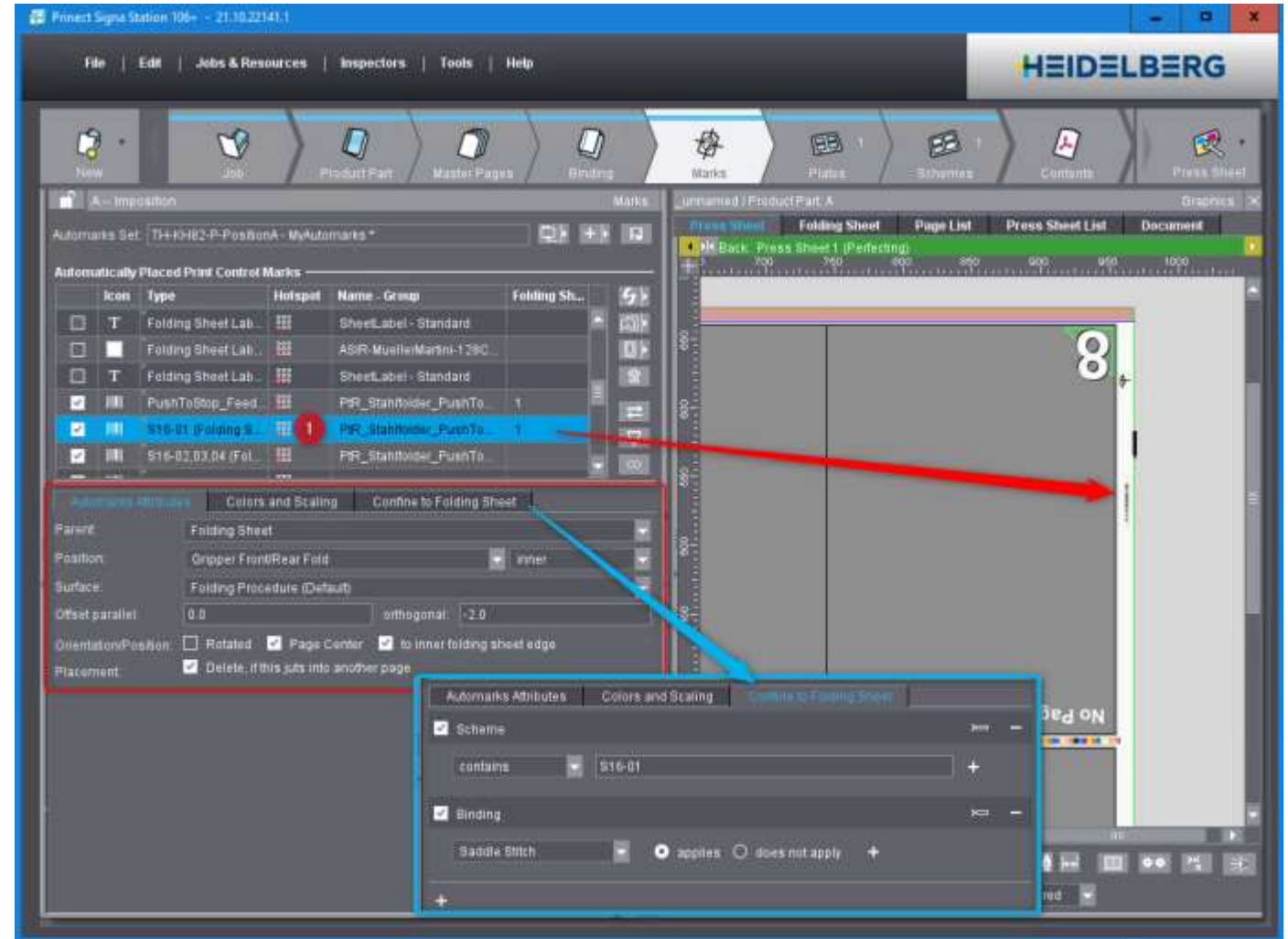
→ Calibration Manager - Generic Multi Process Curve Set | Andreas Vieweg

Our performance

Signa Station - Auto Marks



- Automatic marks placement for
 - Press sheets, folding sheets, pages
 - Push2Stop Stahlfolder
 - 3rd Party finishing devices
- Special marks position
 - Gripper fold front / rear
 - Spine
 - Center
 - To inner folding sheet edge
- Rule based auto marks sets
 - Binding, folding scheme, device...
- Special mark types for press sheets
 - Color control, pull lay, register...



Our performance

Calibration Manager – Generic Multi Process Curve Set



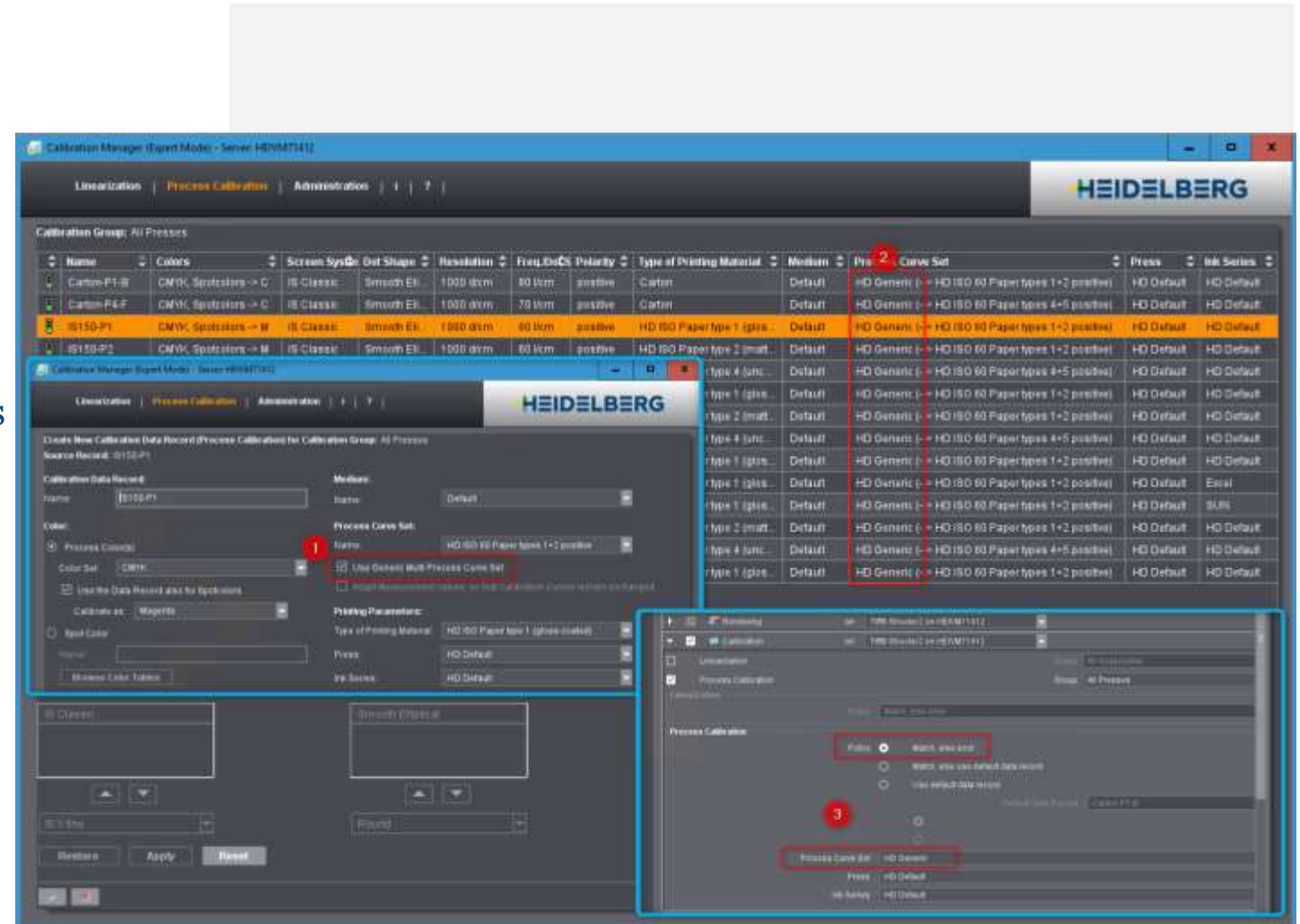
→ Automatic selection of calibrations for different

- Screening systems
- Frequencies
- Printing materials
- Process standards

→ Automated workflow => no incorrect operations

→ Higher flexibility for new printing materials

→ Minimization of Imposition Output Templates





INTERNATIONAL
PRINECT USER DAYS

Workshop for Specialists

Thank you for your attention!